

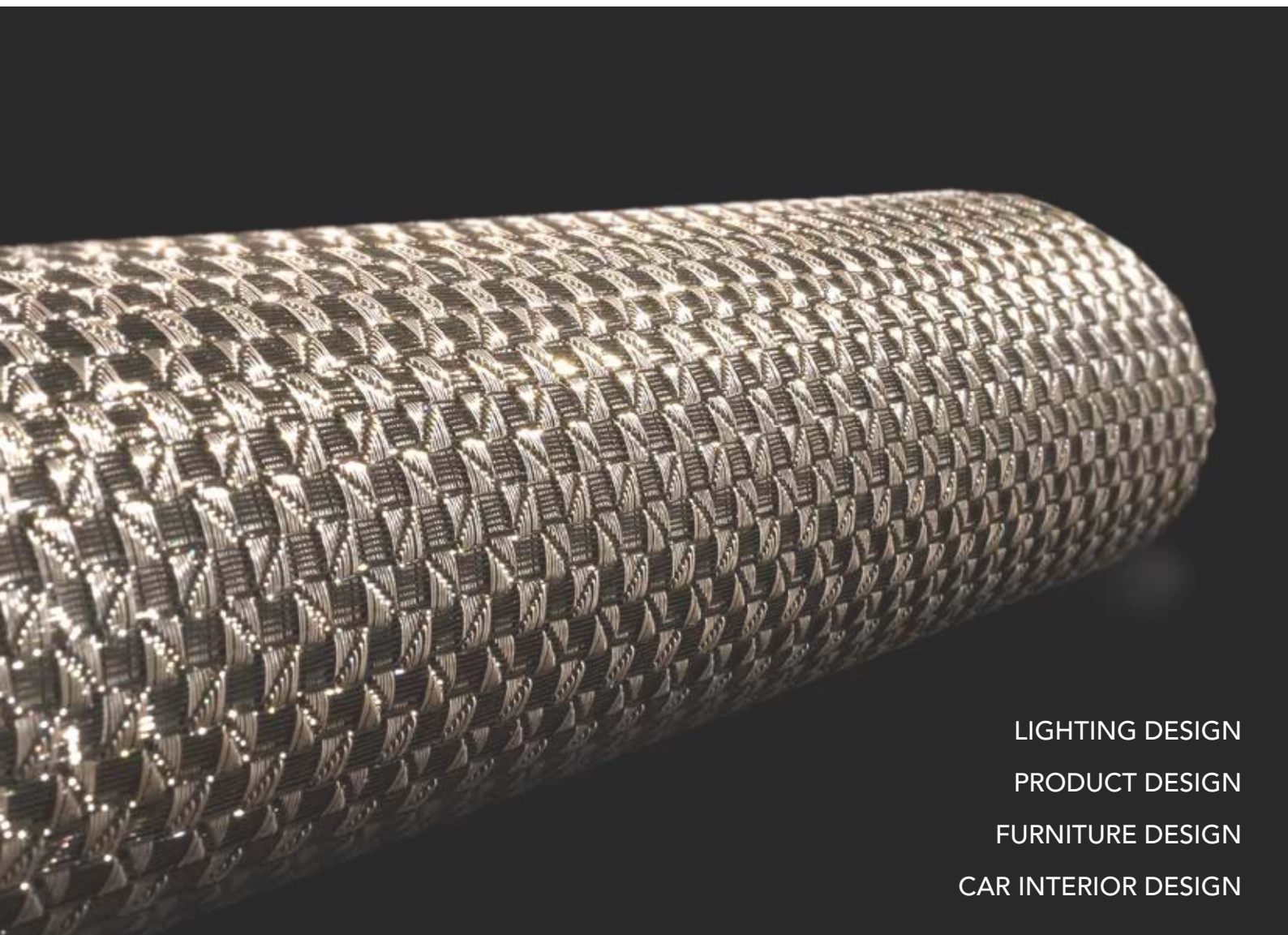
HAVER & BOECKER



DIE DRAHTWEBER

STRUCTURA 6726

TECHNICAL DATA SHEET



LIGHTING DESIGN
PRODUCT DESIGN
FURNITURE DESIGN
CAR INTERIOR DESIGN

HAVER & BOECKER

DESIGN MESH HAVER STRUCTURA

The decorative metal wire mesh or hybrid mesh HAVER STRUCTURA is a versatile design material with exclusive standards. Depending on the type of weave and aperture shape - open and transparent or tightly closed - structures with different appearances and textures will arise. Further effects can be produced by using various combinations of materials. Hybrid mesh combines stainless steel with one or even several coloured PET monofilaments in innovative patterns. The possibilities are endless - as all RAL colours can be used.

STRUCTURA 6726

Description:

Code-No.:	6726
Article-No.:	209962901
Material [1]:	warp: stainless steel 1.4404 (AISI 316L) weft: PET black, RAL 9011
Weight [2]:	0.40 kg/m ²
Thickness [2]:	0.45 mm

Dimensions:

Maximum width:	1.20 m
Maximum length:	by arrangement

Mechanical characteristics:

Yield strength:	warp: 100 N/cm weft: 105 N/cm
Maximum load:	warp: 200 N/cm weft: 640 N/cm
Elongation:	warp: 25 % weft: 45 %

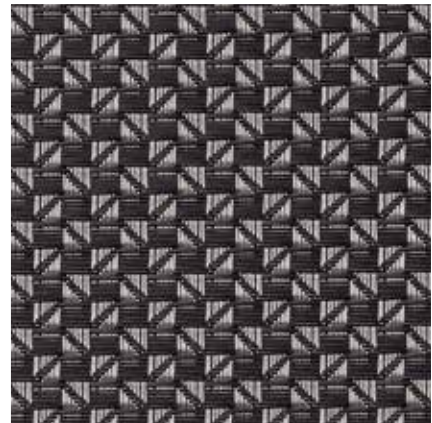
Basis:

Standard:	DIN ISO 9044 / industrial woven wire cloth
Origin:	made in Germany

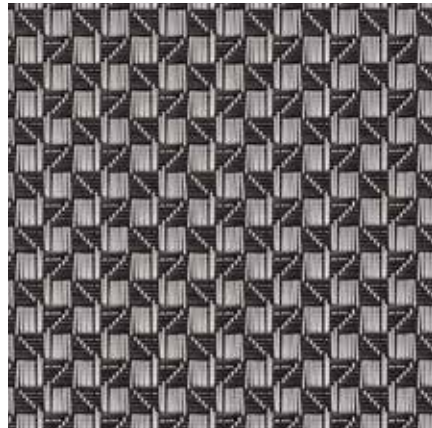
[1] Parts of the melt analysis do not correspond to EN 10088-3.
The given AISI-designations are general recommendations.
[2] Rounded values.

At a glance:

Front:



Back:



HAVER & BOECKER oHG

Wire Weaving Division · Woven Media and Post Weaving Processes

Ennigerloher Straße 64 · 59302 Oelde · Germany

Phone: +49 (0) 25 22-30 8796 · Fax: +49 (0) 25 22-30 404

E-Mail: GuA@haverboecker.com · Internet: www.haverboecker.com