

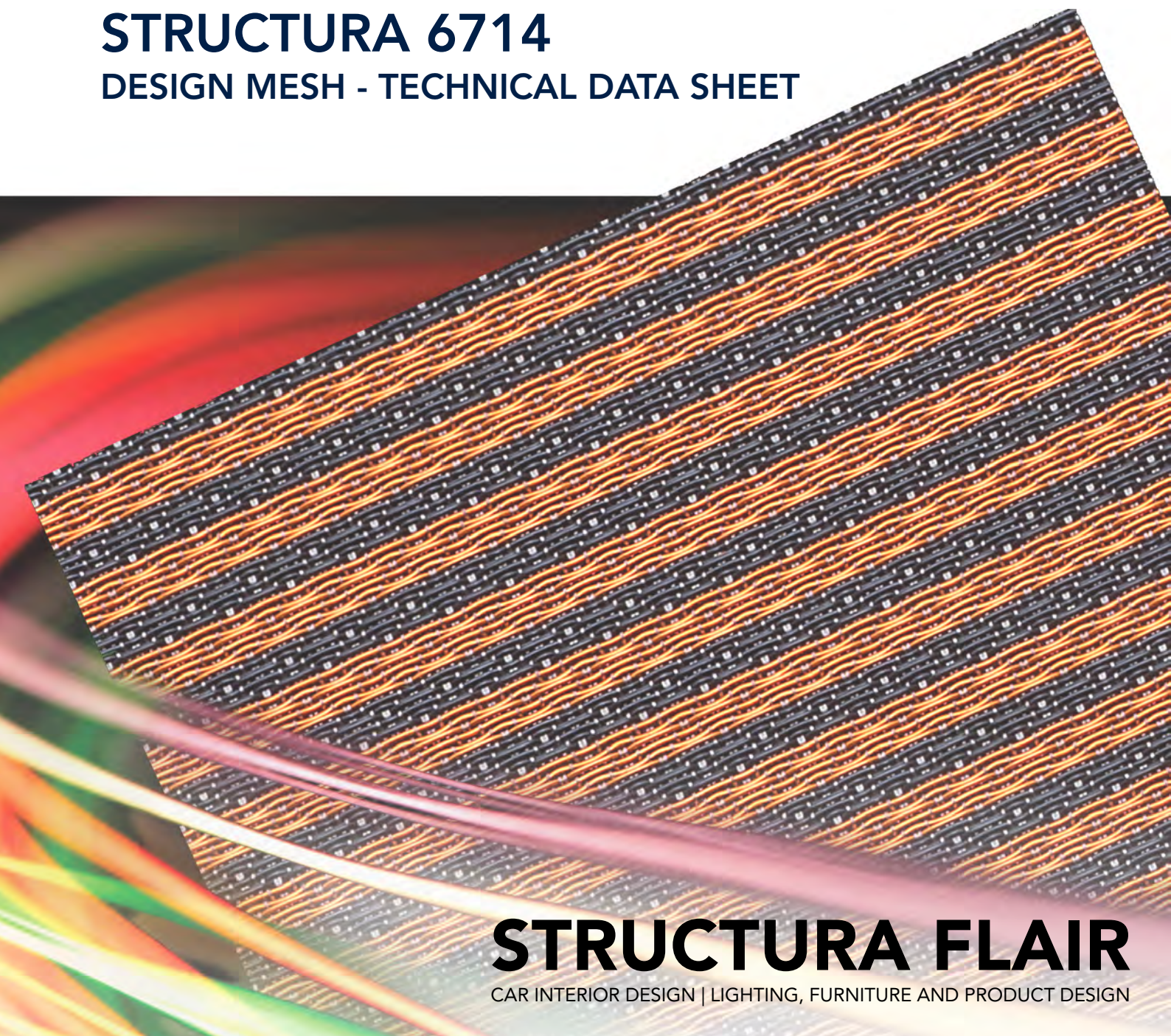
**HAYER & BOECKER**



**DIE DRAHTWEBER**

# **STRUCTURA 6714**

**DESIGN MESH - TECHNICAL DATA SHEET**



# **STRUCTURA FLAIR**

CAR INTERIOR DESIGN | LIGHTING, FURNITURE AND PRODUCT DESIGN



# DESIGN MESH HAVER STRUCTURA FLAIR

The design mesh HAVER STRUCTURA is a versatile design material with exclusive standards. Depending on the type of weave and aperture shape - open and transparent or tightly closed - structures with different appearances and textures will arise. Further effects can be produced by using various combinations of materials.

The **STRUCTURA FLAIR** collection combines stainless steel with one or even several coloured PET monofilaments in innovative patterns. The possibilities are endless - as all RAL colours can be used.

## STRUCTURA 6714

### Description:

Code-No.:	6714
Article-No.:	208861991
Collection:	STRUCTURA FLAIR
Material [1]:	warp: stainless steel 1.4404 (AISI 316L) weft: PET black, RAL 9011 copper lacquer
Weight [2]:	0.90 kg/m <sup>2</sup>
Thickness [2]:	0.55 mm

### Dimensions:

Maximum width:	1.20 m
Maximum length:	by arrangement

### Mechanical characteristics:

Yield strength:	warp: 55 N/cm   weft: 95 N/cm
Maximum load:	warp: 220 N/cm   weft: 350 N/cm
Elongation:	warp: 20 %   weft: 25 %

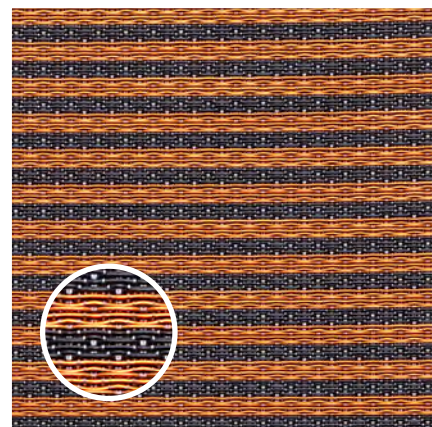
### Basis:

Standard:	DIN ISO 9044 / industrial woven wire cloth
Origin:	made in Germany

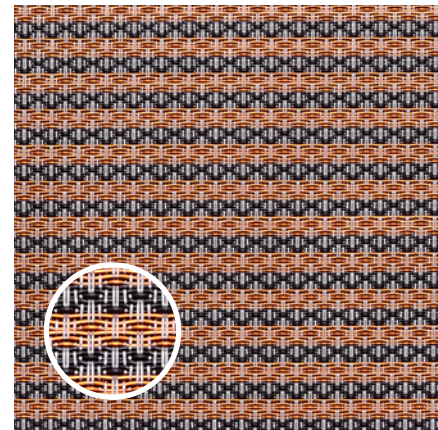
[1] Parts of the melt analysis do not correspond to EN 10088-3.  
The given AISI-designations are general recommendations.  
[2] Rounded values.

### At a glance:

Front:



Back:



HAVER & BOECKER oHG

Wire Weaving Division · Filters and Fabricated Parts

Ennigerloher Straße 64 · 59302 Oelde · Germany

Phone: +49 (0) 25 22-30 522 · Fax: +49 (0) 25 22-30 404

E-Mail: [fuf@haverboecker.com](mailto:fuf@haverboecker.com) · Internet: [www.weavingideas.com/design-mesh](http://www.weavingideas.com/design-mesh)