

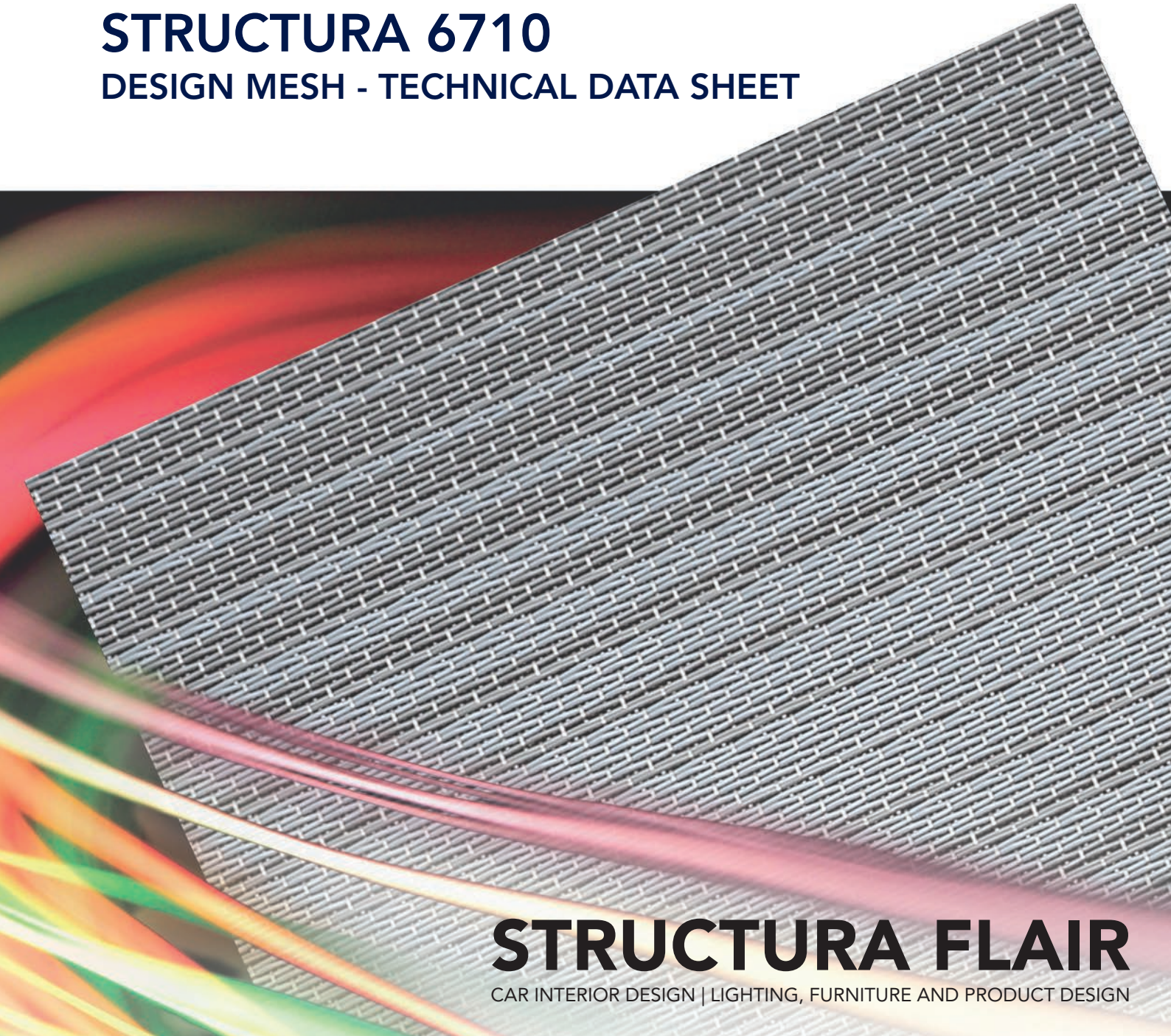
HAYER & BOECKER



DIE DRAHTWEBER

STRUCTURA 6710

DESIGN MESH - TECHNICAL DATA SHEET



STRUCTURA FLAIR

CAR INTERIOR DESIGN | LIGHTING, FURNITURE AND PRODUCT DESIGN

HAYER & BOECKER

DESIGN MESH HAVER STRUCTURA FLAIR

The design mesh HAVER STRUCTURA is a versatile design material with exclusive standards. Depending on the type of weave and aperture shape - open and transparent or tightly closed - structures with different appearances and textures will arise. Further effects can be produced by using various combinations of materials.

The **STRUCTURA FLAIR** collection combines stainless steel with one or even several coloured PET monofilaments in innovative patterns. The possibilities are endless - as all RAL colours can be used.

STRUCTURA 6710

Description:

Code-No.:	6710
Article-No.:	208742771
Collection:	STRUCTURA FLAIR
Material [1]:	warp: stainless steel 1.4404 (AISI 316L) weft: PET light grey, RAL 7001 PET dark grey, RAL 7037
Weight [2]:	0.40 kg/m ²
Thickness [2]:	0.45 mm

Dimensions:

Maximum width:	1.20 m
Maximum length:	by arrangement

Mechanical characteristics:

Yield strength:	warp: 85 N/cm weft: 90 N/cm
Maximum load:	warp: 180 N/cm weft: 520 N/cm
Elongation:	warp: 20 % weft: 50 %

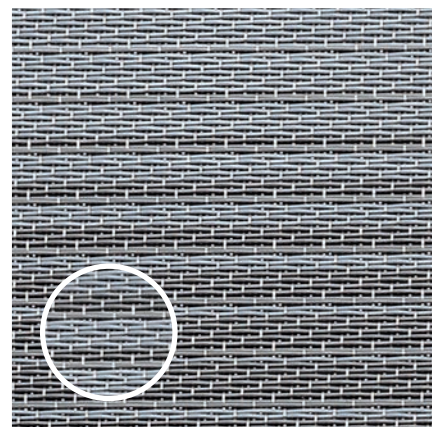
Basis:

Standard:	DIN ISO 9044 / industrial woven wire cloth
Origin:	made in Germany

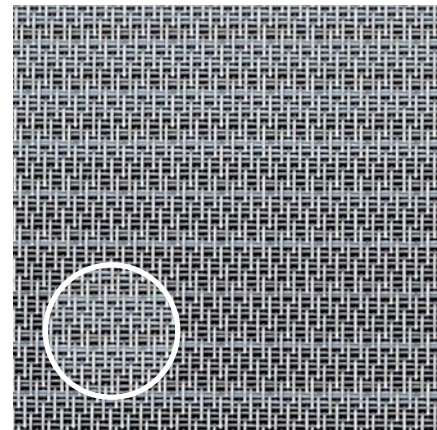
[1] Parts of the melt analysis do not correspond to EN 10088-3.
The given AISI-designations are general recommendations.
[2] Rounded values.

At a glance:

Front:



Back:



HAVER & BOECKER oHG

Wire Weaving Division · Filters and Fabricated Parts

Ennigerloher Straße 64 · 59302 Oelde · Germany

Phone: +49 (0) 25 22-30 357 · Fax: +49 (0) 25 22-30 404

E-Mail: fuf@haverboecker.com · Internet: www.haverboecker.com