

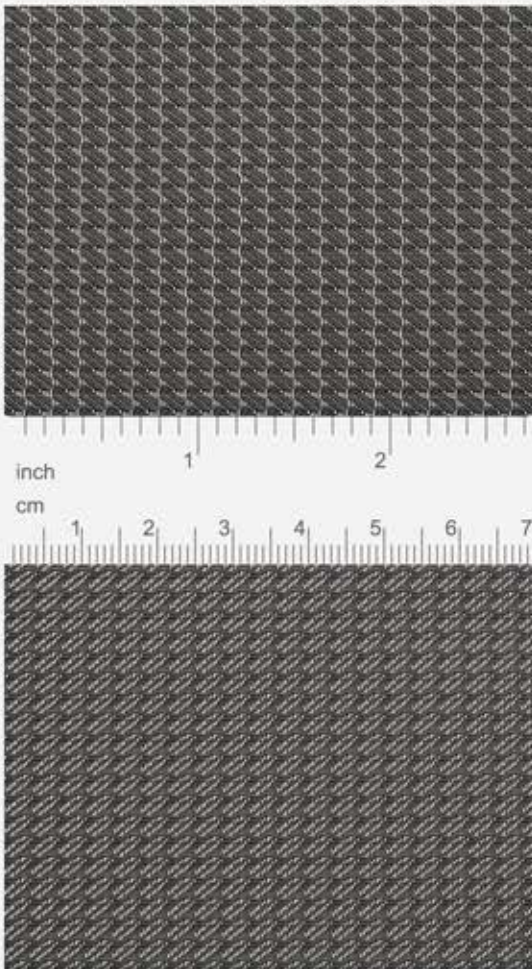
HAYER & BOECKER



DIE DRAHTWEBER

STRUCTURA 6661

TECHNICAL DATA SHEET



OBJECT DESIGN
INTERIOR DESIGN
LIGHTING DESIGN
PRODUCT DESIGN
FURNITURE DESIGN
INTERIOR CAR DESIGN



STRUCTURA 6661

The design mesh HAVER Structura is a versatile design material with exclusive standards. A wide range of woven fabric specifications allows a variety of creative design and layout concepts. Depending on the type of weave and aperture shape - open and transparent or tightly closed - structures with different appearances and textures will arise. Further effects can be produced by using various combinations of materials.

TECHNICAL DATA

Description:

Code-No.:	6661
Article-No.:	00102821
Material [1]:	warp: stainless steel 1.4401 (AISI 316) / 1.4404 (AISI 316 L) weft: PET black
Weight [2]:	0.50 kg/m ²
Thickness [2]:	0.55 mm
Porosity:	84 %

Dimensions:

Maximum width:	1.20 m
Maximum length:	by arrangement

Mechanical characteristics:

Yield strength:	warp: 46 N/cm weft: 144 N/cm
Maximum load:	warp: 199 N/cm weft: 1062 N/cm
Elongation:	warp: 25 % weft: 26 %

Basis:

Standard:	DIN ISO 9044 / industrial woven wire cloth
Origin:	made in Germany

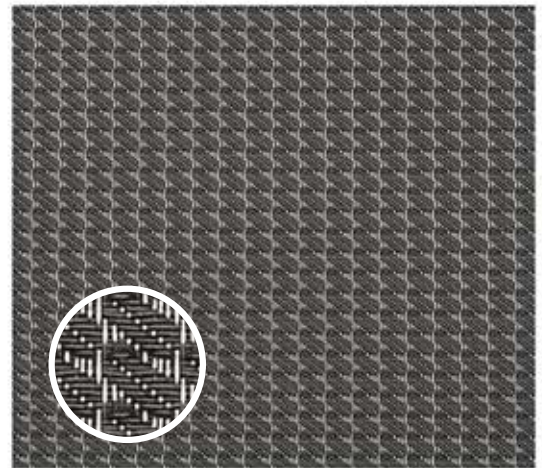
[1] Parts of the melt analysis do not correspond to EN 10088-3.

The given AISI-designations are general recommendations.

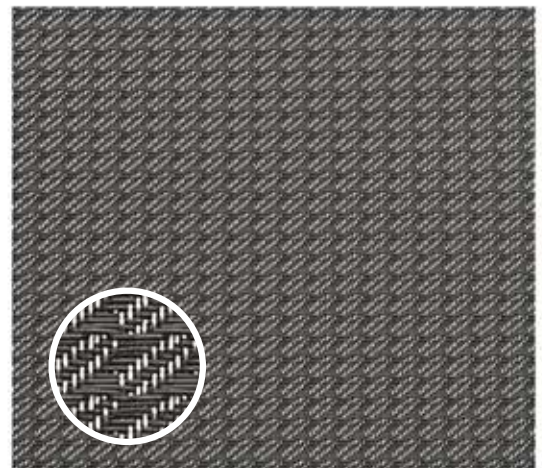
[2] Rounded values.

At a glance:

Front:



Back:



HAVER & BOECKER OHG · Wire Weaving Division
Ennigerloher Straße 64 · 59302 OELDE, Germany
Phone: +49 (0)25 22-30 357 · Fax: +49 (0)25 22-30 404
E-Mail: fuf@haverboecker.com · Internet: www.haverboecker.com