

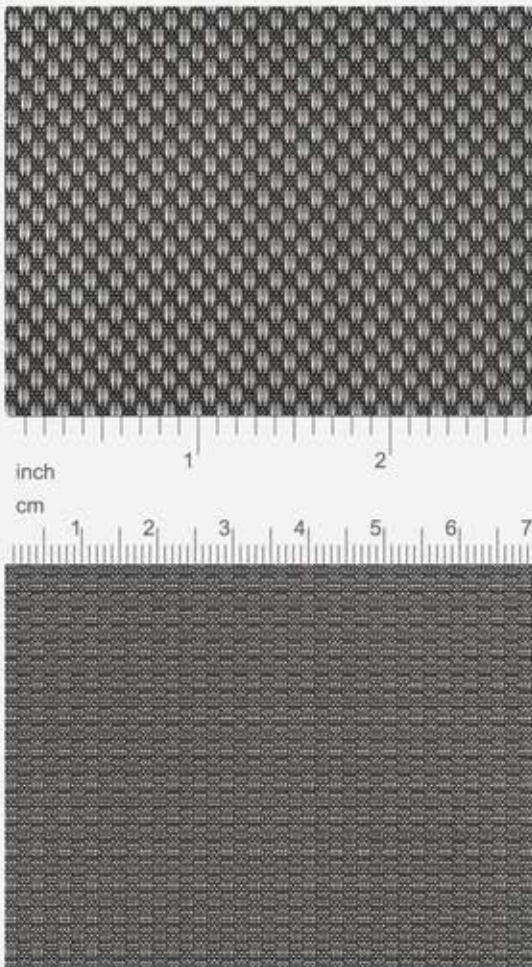
**HAYER & BOECKER**



DIE DRAHTWEBER

# STRUCTURA 6658

## TECHNICAL DATA SHEET



OBJECT DESIGN  
INTERIOR DESIGN  
LIGHTING DESIGN  
PRODUCT DESIGN  
FURNITURE DESIGN  
INTERIOR CAR DESIGN



# STRUCTURA 6658

The design mesh HAYER Structura is a versatile design material with exclusive standards. A wide range of woven fabric specifications allows a variety of creative design and layout concepts. Depending on the type of weave and aperture shape - open and transparent or tightly closed - structures with different appearances and textures will arise. Further effects can be produced by using various combinations of materials.

## TECHNICAL DATA

### Description:

Code-No.:	6658
Article-No.:	00102806
Material [1]:	warp: stainless steel 1.4401 (AISI 316) / 1.4404 (AISI 316 L) weft: PET black
Weight [2]:	0.40 kg/m <sup>2</sup>
Thickness [2]:	0.50 mm
Porosity:	85 %

### Dimensions:

Maximum width:	1.20 m
Maximum length:	by arrangement

### Mechanical characteristics:

Yield strength:	warp: 63 N/cm weft: 101 N/cm
Maximum load:	warp: 191 N/cm weft: 685 N/cm
Elongation:	warp: 28 % weft: 25 %

### Basis:

Standard:	DIN ISO 9044 / industrial woven wire cloth
Origin:	made in Germany

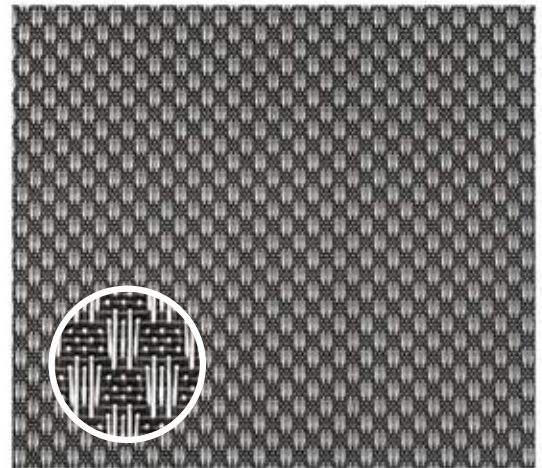
[1] Parts of the melt analysis do not correspond to EN 10088-3.

The given AISI-designations are general recommendations.

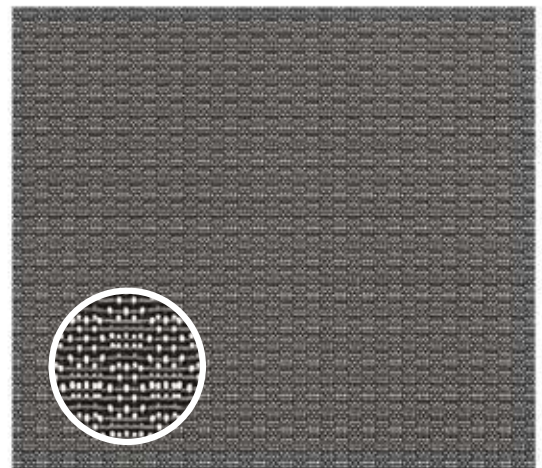
[2] Rounded values.

### At a glance:

Front:



Back:



HAYER & BOECKER OHG · Wire Weaving Division  
Ennigerloher Straße 64 · 59302 OELDE, Germany  
Phone: +49 (0)25 22-30 357 · Fax: +49 (0)25 22-30 404  
E-Mail: fuf@haverboecker.com · Internet: www.haverboecker.com