

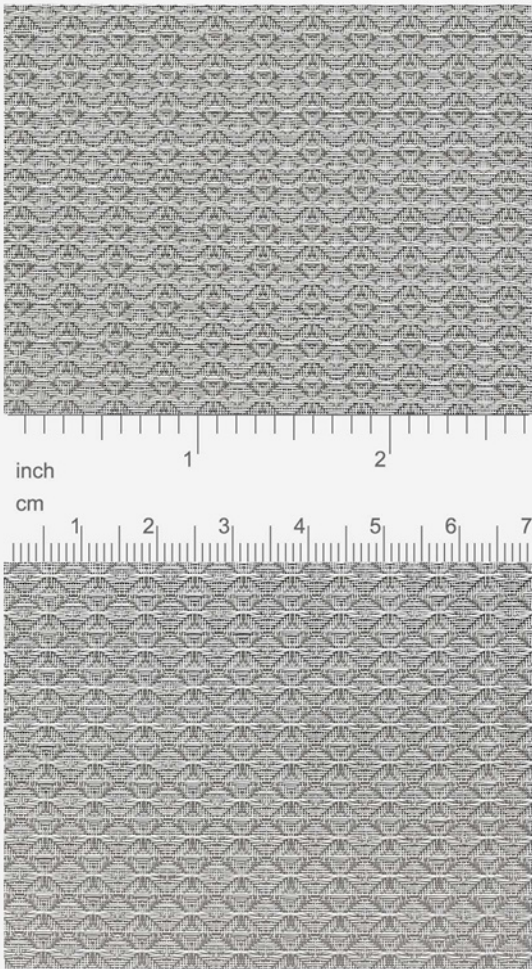
**HAYER & BOECKER**



DIE DRAHTWEBER

# STRUCTURA 6641

## TECHNICAL DATA SHEET



OBJECT DESIGN  
INTERIOR DESIGN  
LIGHTING DESIGN  
PRODUCT DESIGN  
FURNITURE DESIGN  
INTERIOR CAR DESIGN



# STRUCTURA 6641

The design mesh HAVER Structura is a versatile design material with exclusive standards. A wide range of woven fabric specifications allows a variety of creative design and layout concepts. Depending on the type of weave and aperture shape - open and transparent or tightly closed - structures with different appearances and textures will arise. Further effects can be produced by using various combinations of materials.

## TECHNICAL DATA

### Description:

Code-No.:	6641
Article-No.:	00101571
Material [1]:	warp and weft: stainless steel 1.4401 (AISI 316) / 1.4404 (AISI 316 L)
Weight [2]:	1.25 kg/m <sup>2</sup>
Thickness [2]:	0.95 mm
Porosity:	83 %

### Dimensions:

Maximum width:	1.35 m
Maximum length:	by arrangement

### Mechanical characteristics:

Yield strength:	warp: 212 N/cm weft: 126 N/cm
Maximum load:	warp: 742 N/cm weft: 385 N/cm
Elongation:	warp: 29 % weft: 25 %

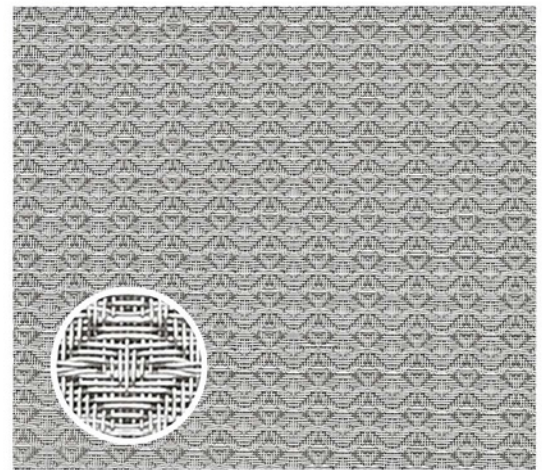
### Basis:

Standard:	DIN ISO 9044 / industrial woven wire cloth
Origin:	made in Germany

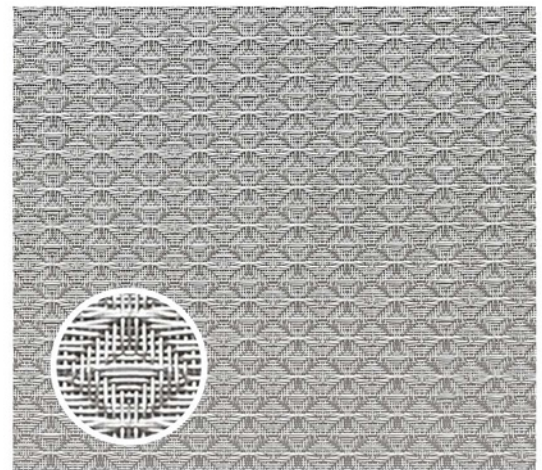
[1] Parts of the melt analysis do not correspond to EN 10088-3.  
The given AISI-designations are general recommendations.  
[2] Rounded values.

### At a glance:

#### Front:



#### Back:



HAVER & BOECKER OHG

Wire Weaving Division · Filters and Fabricated Parts

Ennigerloher Straße 64 · 59302 OELDE, Germany

Phone: +49 (0)25 22-30 522 · Fax: +49 (0)25 22-30 404

E-Mail: [fuf@haverboecker.com](mailto:fuf@haverboecker.com) · Internet: [www.weavingideas.com/design-mesh](http://www.weavingideas.com/design-mesh)