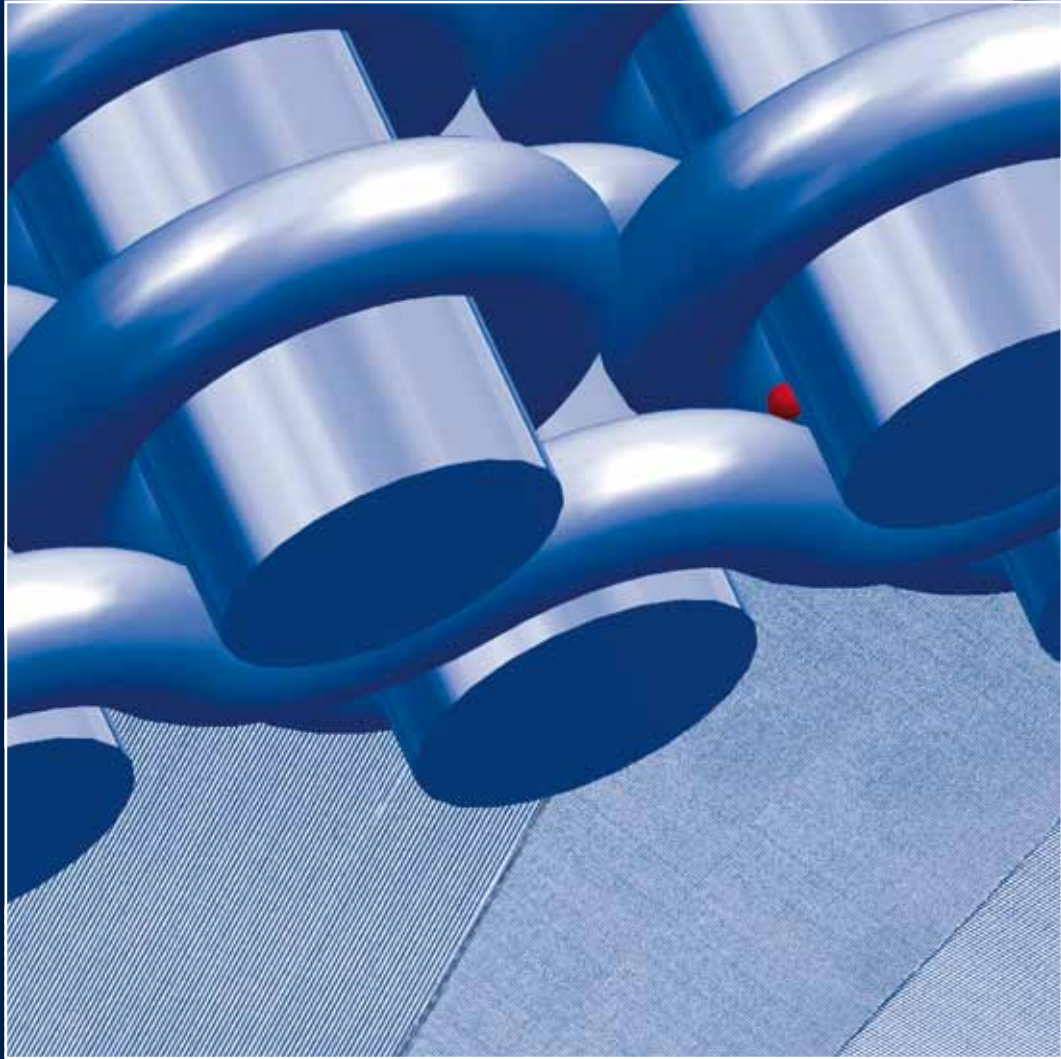


HAYER & BOECKER



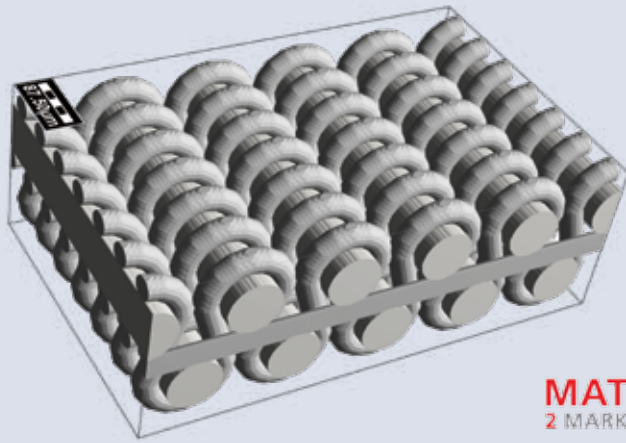
DIE DRAHTWEBER



**MINIMESH® RPD HIFLO-S
HIGH PERFORMANCE METAL FILTER CLOTH
IN A NEW DIMENSION.**

HAYER & BOECKER

RPD HIFLO-S: A REVOLUTION IN FILTRATION.



Where conventional filter cloths have reached their limits, MINIMESH® RPD HIFLO-S opens up new dimensions for filtration. Using new weaving technology developed by Haver & Boecker, a three-dimensional pore geometry is created that gives the MINIMESH® RPD HIFLO-S metal filter cloth truly exceptional qualities. With its cutting-edge features, it fulfils key requirements for industrial use.

Twice the flow at the same pore size.

Previous filter cloths with small pore sizes lead to reduced flow rates and significant pressure loss in the production process. With MINIMESH® RPD HIFLO-S reverse plain Dutch weave, this loss of performance is eliminated.

This is due to the revolutionary cloth structure, which effectively increases the number of pores and thus the open surface over the same area. The effect: For a given pore size, the flow rate is more than doubled. In addition, the flow conditions are optimised and turbulence around the filter cloth is effectively avoided.

Corrosion and temperature resistant special materials.

MINIMESH® RPD HIFLO-S metal filter cloth can be made using relatively strong wires. For one, this has a positive effect on the cost. For another, even in the small pore range, special materials – such as Alloy 310 S,

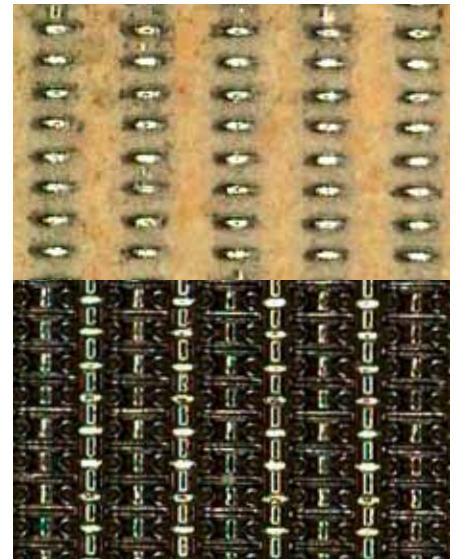
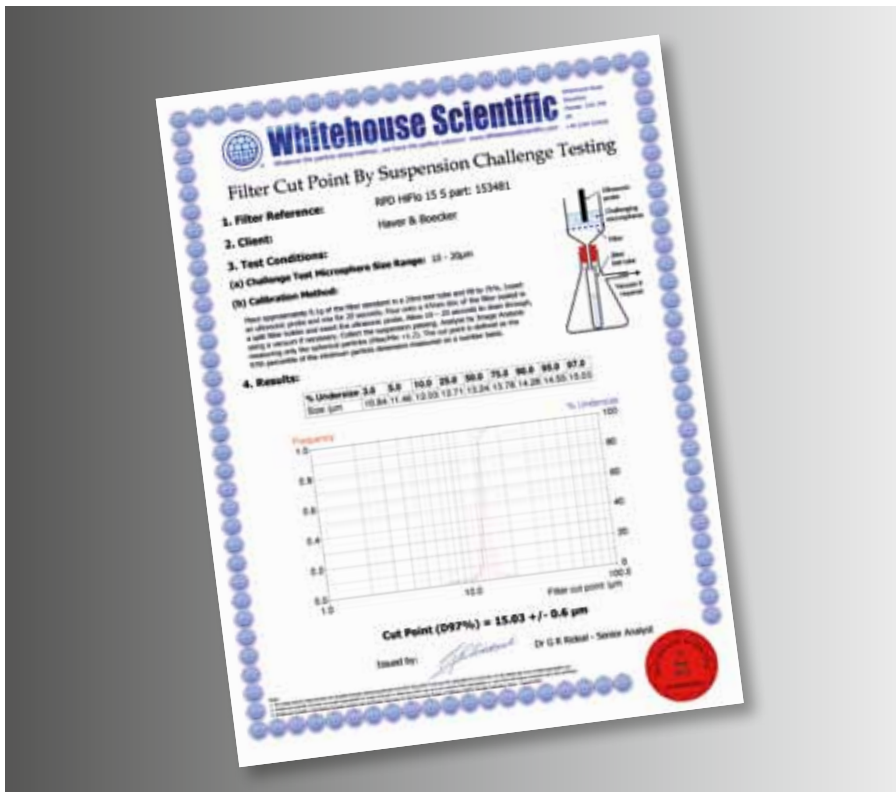


Inconel 600, Superduplex, Duplex, Hastelloy C 22 or titanium – can now be successfully woven, which previously had not been possible. With MINIMESH® RPD HIFLO-S, corrosion- and temperature-resistant filter cloth with pore sizes smaller than 40 microns are available for the first time.

Flow compared to a conventional DTW-S (left) and a RPD HIFLO-S (right), both with 15 micron pore size.



HIGH PERFORMANCE: CUT-POINT AND LONGEVITY.

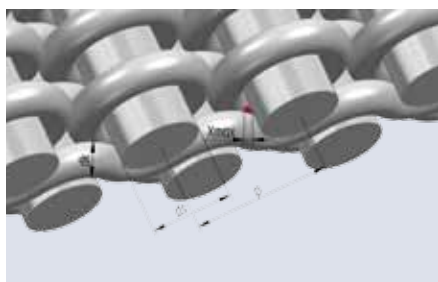
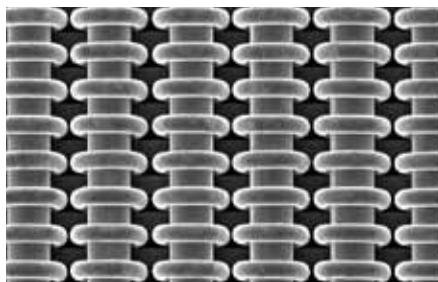


Dirt holding capacity of a RPD HIFLO 40-S.
 Above: loaded, below: unloaded

The highest level of precision, even after processing.

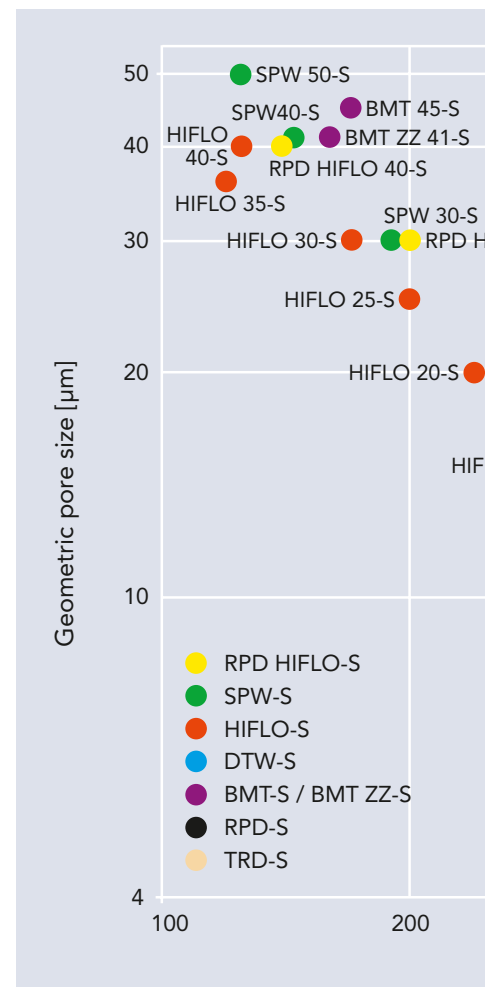
The pore size of MINIMESH® RPD HIFLO-S metal filter cloth can be calculated precisely in advance and adapted to the respective require-

ments. These precision pores can achieve extremely high cut-points and dimensional stability. The independent and internationally renowned institute Whitehouse Scientific has tested and confirmed these properties.



Optimum dirt holding and purging properties.

The depth structure of MINIMESH® RPD HIFLO-S facilitates high separation efficiency without rapid blinding. This leads to longer filtration processes between cleaning intervals and longer filter service life. The dirt holding capacity and cleaning characteristics have proved to be excellent. Filtration processes are efficient, safe and stable with a long service life of the filter elements.



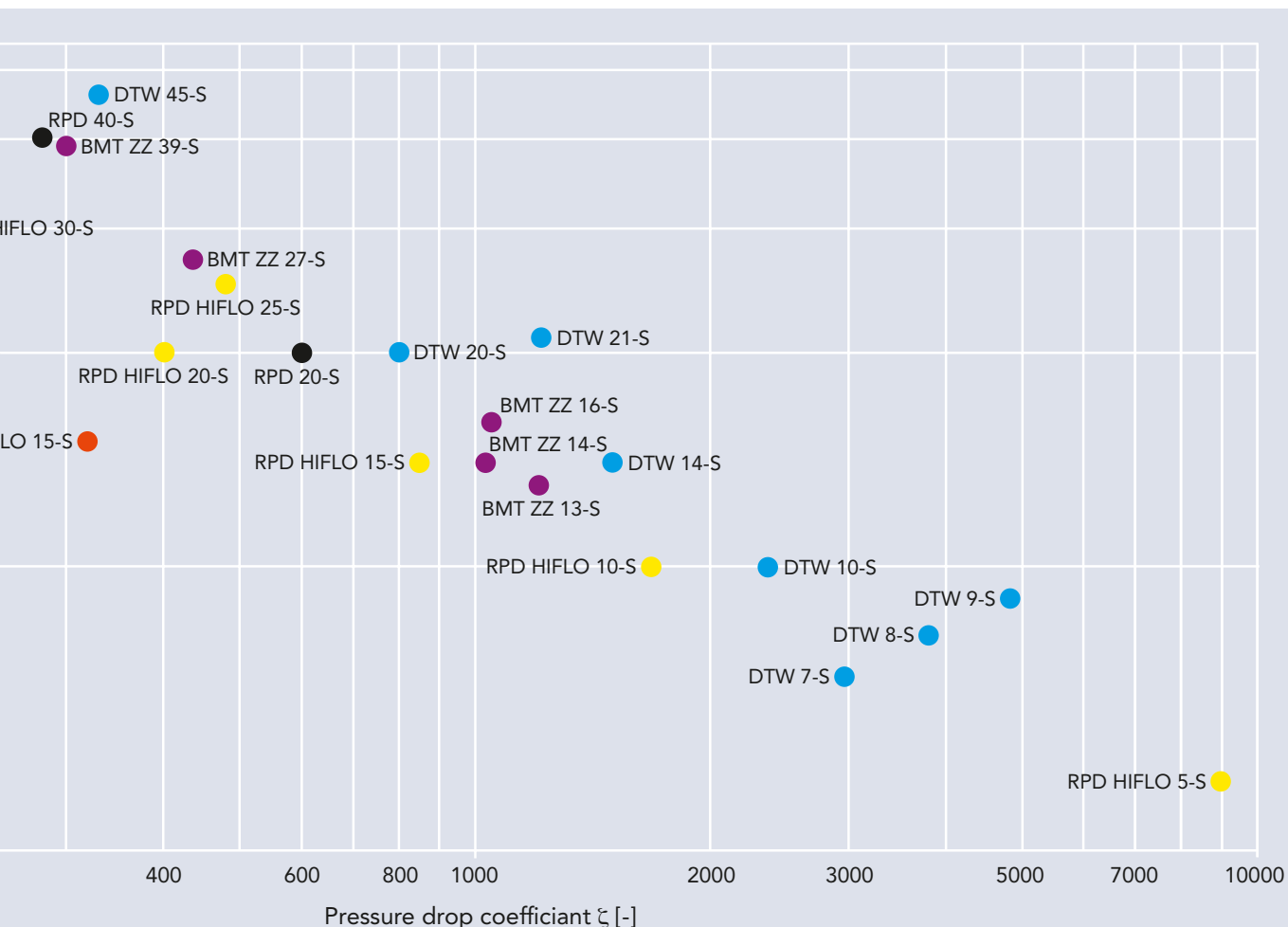
1	2	3	4	5		6	7	8
Type of weave	MESH	Geometric pore size μm^*	Pressure drop-coefficient ζ	Tensile strength warp N/cm	weft N/cm	Porosity theor. %	Weight kg/m^2	Cloth thickness mm
RPD HIFLO 5-S	850 x 380	5	9020	100	510	34	0.95	0.18
RPD HIFLO 10-S	850 x 380	10	1680	100	500	44	0.95	0.21
RPD HIFLO 15-S	850 x 380	15	850	110	510	49	0.95	0.23
RPD HIFLO 20-S	640 x 200	20	400	140	780	53	1.35	0.36
RPD HIFLO 25-S	425 x 150	25	480	190	490	54	1.10	0.30
RPD HIFLO 30-S	425 x 150	30	200	205	485	64	1.10	0.38
RPD HIFLO 40-S	325 x 115	40	140	270	570	64	1.50	0.52

* Geometric poresize verified by glass bead test, tolerance $\pm 10\%$

Different pore sizes in one lot.

The innovative weaving technology of MINIMESH® RPD HIFLO-S allows to calibrate the pore size within one batch from 5 to 40 microns as

desired. The production volumes can thus be perfectly matched to the specific requirements.





The reinvention of industrial metal filter cloth.

MINIMESH® RPD HIFLO-S high-performance metal filter cloth is fundamentally different from all previous woven metal media. Manufactured utilising a revolutionary weaving technology, it has properties that set new standards and make industrial filtration processes quicker, safer and more efficient.

- For a given pore size, twice the flow of comparable filter cloths.
- Excellent cut-point and stability
- Corrosion and temperature resistant special alloys
- Optimum dirt holding and purging properties

Belgium

HAVER BELGIUM S.A.

Rue des Gaillettes 9
B-4651 BATTICE
Téléphone: +32-87-69 29 60
Fax: +32-87-69 29 61
E-Mail: hbsa@cybernet.be
Internet: www.haverbelgium.com

France

HAVER & BOECKER

Toiles Métalliques

7, Rue Sainte Catherine
F-24100 BERGERAC
Téléphone: +33-5-53 24 93 13
Fax: +33-5-53 24 95 99
E-Mail: haver.toiles@wanadoo.fr
Internet:
www.les-tissus-metalliques.com

Spain

HAVER & BOECKER

Telas Metalicas
Avda. Les Bobiles, 7
Casa 2
E-08850 GAVA (Barcelona)
Teléfono: +34-93-6 62 63 55
Fax: +34-93-6 62 90 59
E-Mail: haverboecker@telefonica.net
Internet: www.telas-metalicas.com

Great Britain

H&B Wire Fabrications Ltd.

30-32 Tatton Court
Kingsland Grange, Woolston
GB-WARRINGTON,
Cheshire WA1 4RR
Phone: +44-1925-81 95 15
Fax: +44-1925-83 17 73
E-Mail: sales@hbwf.co.uk
Internet: www.hbwf.co.uk

Belarus

OOO HAVER BY

Ul. Zhukova, D.3
231300 LIDA, GRODNO
Тел/факс: +375-154-53-82-52
E-Mail: info@haver.by
Internet: www.haver.by

India

HAVER STANDARD INDIA Pvt. Ltd.

Standard House, 83,
Maharshi Karve Marg,
P.O.Box 2082, MUMBAI - 400 002
Phone: 22-22060016 + 22060031
Fax: 22-22086915
E-Mail: wiremesh@haverstandard.com
Internet: www.haverstandard.com

U.S.A.

W.S. TYLER

8570 Tyler Boulevard
USA-MENTOR, Ohio 44060
Phone: +1-440-974-1047
+1-800-321-6188
Fax: +1-440-974-0921
E-Mail: wstyler@wstyler.com
Internet: www.wstyler.com

Canada

W.S. TYLER CANADA LTD.

225 Ontario Street
CAN-ST. CATHARINES,
Ontario L2R 7B6
Phone: +1-905-688-2644
+1-800-325-5993
Fax: +1-905-688-4733
E-Mail: wstsales@wstyler.on.ca
Internet: www.wstyler.on.ca

HAVER & BOECKER OHG · Ennigerloher Straße 64 · 59302 OELDE · Germany
Phone: +49-(0)25 22-300 · Fax: +49-(0)25 22-30 404
E-Mail: dw@haverboecker.com
Internet: www.weavingideas.com